

# Specifications

## MYGEN™ Generator

Model: M-3004



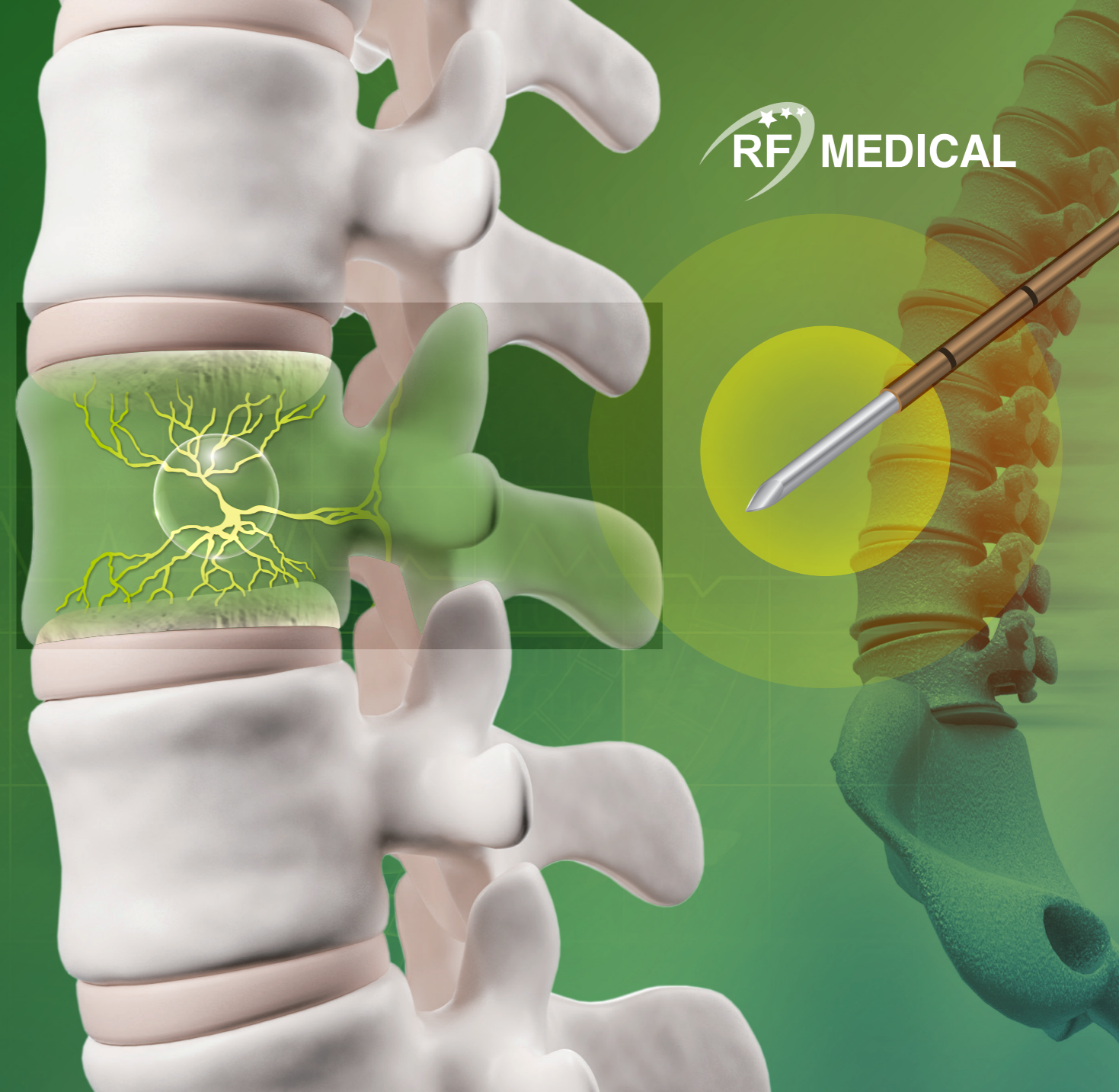
Input Power Voltage	AC 110V, 127V, 220V-240V
Input Power Frequency	50/60Hz
Maximum Input Power	410VA
Output RF Frequency	480kHz
Output RF Power	200W
Measuring Temperature	1°C-200°C
Load Impedance Range	Z=25-1000 Ω at 480 kHz

## VertiBlate™ Electrode

Model: BMDT



Product Code	Diameter	Length	Exposure Length
BMDT 1310B	∅ 1.5mm (17G)	13cm	10mm
BMDT 1315B		13.5cm	15mm
BMDT 1420B		14cm	20mm
BMDT 1425B		14.5cm	25mm
BMDT 1530B		15cm	30mm
BMDT 1610B		16.5cm	10mm
BMDT 1715B		17cm	15mm
BMDT 1720B		17.5cm	20mm
BMDT 1825B		18cm	25mm
BMDT 1830B		18.5cm	30mm



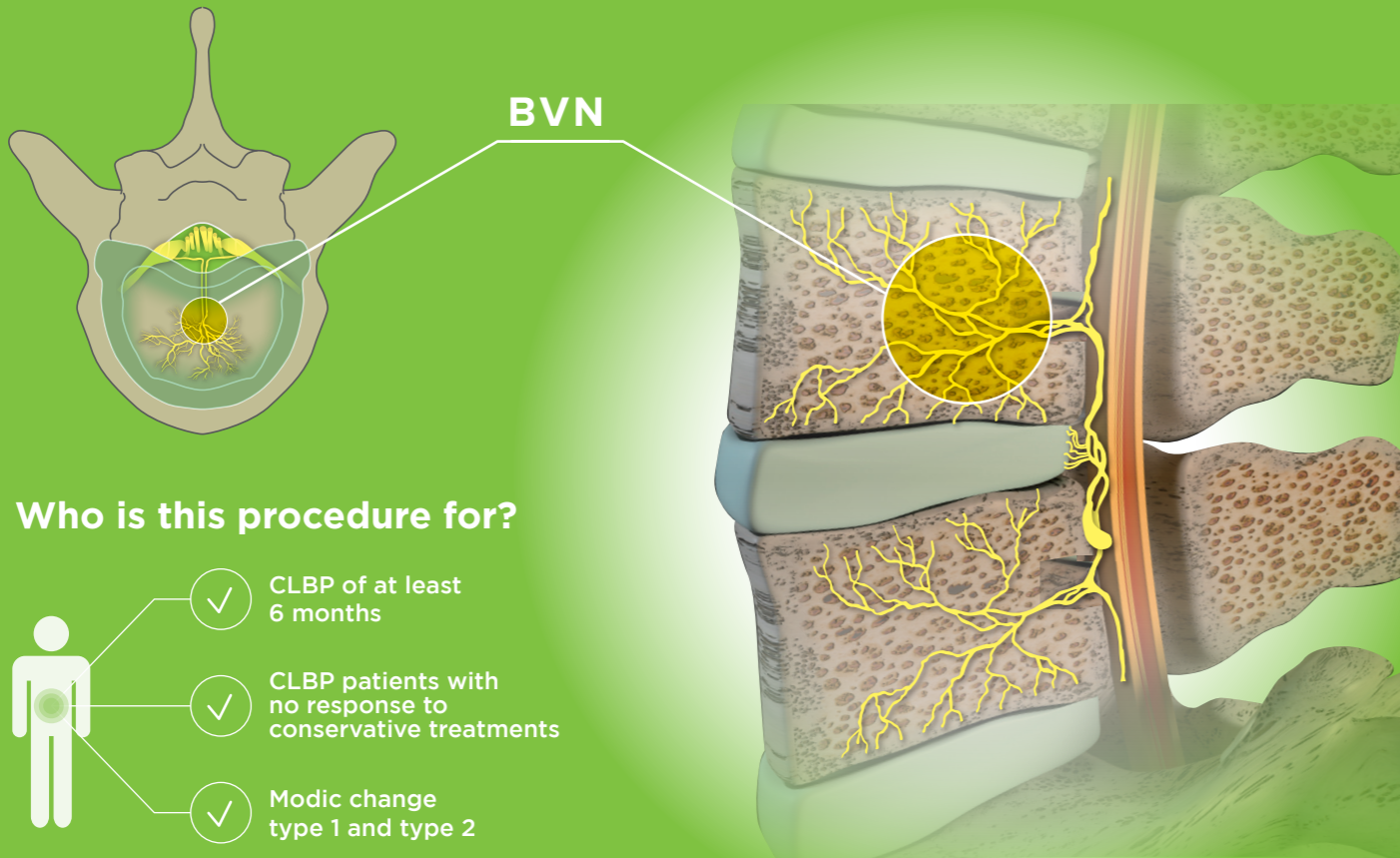
## Registrations

- ✓ USA FDA 510(k)\*
- ✓ CE 1639
- ✓ Korea
- ✓ Brazil
- ✓ Saudi Arabia
- ✓ Mexico\*
- ✓ Vietnam
- ✓ Indonesia
- ✓ Turkey
- ✓ UAE
- ✓ Kazakhstan

\* In the registration process

# What is VertiBlate™ RFA Procedure?

Basivertebral Nerve (BVN) Radiofrequency Ablation (RFA) is a minimally-invasive procedure for the relief of vertebrogenic chronic low back pain (CLBP) using thermal (radiofrequency) energy.



## Who is this procedure for?

- ✓ CLBP of at least 6 months
- ✓ CLBP patients with no response to conservative treatments
- ✓ Modic change type 1 and type 2

## Features

- Minimally-invasive Procedure
- Outpatient Procedure
- Fast Procedure

## Benefits

- Immediate and long-lasting relief of vertebrogenic CLBP
- Preservation of bone and other spinal structures integrity

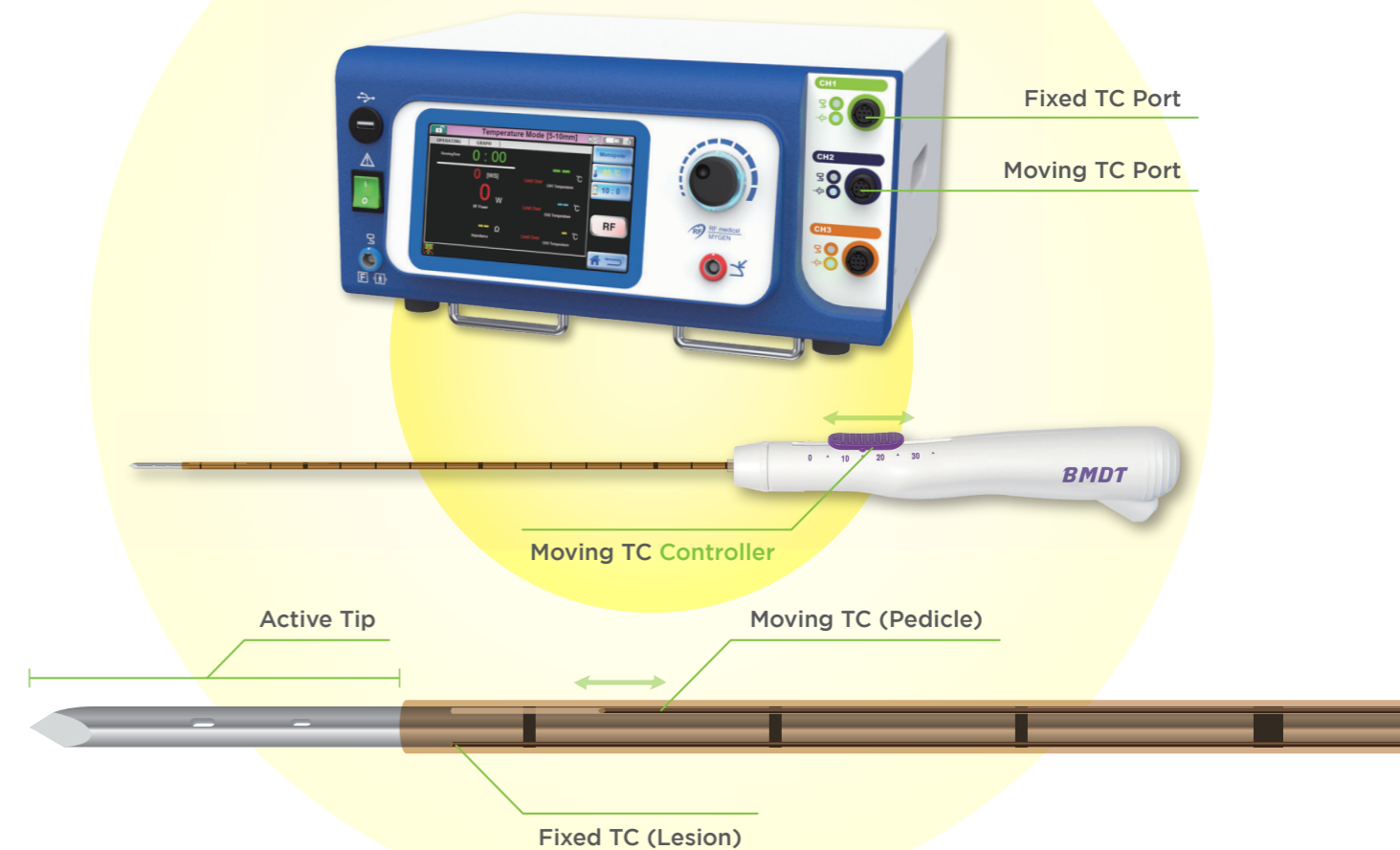
## Possible Complications

- ✓ Mild incisional pain and leg paresthesia, incisional bleeding infection, nerve root injury or hematoma, radiculopathy, vertebral compression fracture.
- ✓ No reports on the thermal injuries, pedicle fractures, avascular necrosis.\*

\* Developments in Minimally Invasive Surgical Options for Vertebral Pain: Basivertebral Nerve Ablation. V. Francio, D. Sherwood, E. Twoney, et al. Journal of Pain Research. 2021:14 1887-1907.

# What is VertiBlate™ RFA System?

Radiofrequency ablation system with temperature-controlled algorithm and dual thermocouples (TC) for extra safety.



## Features

- Temperature-controlled Algorithm → Maintains a Constant Temperature to Ensure a Safe Ablation
- Moving Thermocouple → Real-time Temperature Monitoring of Neural Structures
- Monopolar RF → Produces Bigger Ablation Size
- 17G Thin Electrode → Requires Less Drilling to the Bone
- Specialized Active Tip Sizes → Provides an Optimal Ablation Size of BVN