

# EXCELOS INJECT

$\beta$ -tricalcium phosphate beads mixed  
with bio-degradable hydrogel



Injectable type

# EXCELOS INJECT

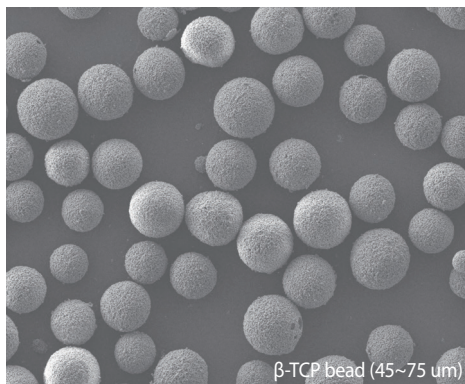
## Injectable Synthetic Bone Substitute

EXCELOS INJECT is composed of  $\beta$ -tricalcium phosphate and poloxamer.

EXCELOS INJECT is a bone graft material which can be applied percutaneously in closed defects or directly implanted in the surgical site.

In indications, requiring stable osteosynthesis, EXCELOS INJECT is used as a complementary bone substitute material.

### Compositon & Characteristics



#### $\beta$ -tricalcium beads

Allows cancellous bone infiltration without being absorbed by macrophage.

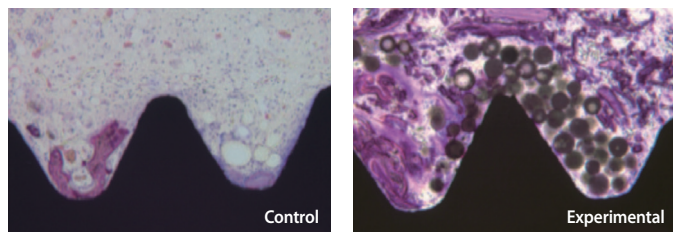
#### Poloxamer

- Moldable at the time of application
- Packable into virtually any size or shape defect
- Mixable with other grafting materials
- Irrigation-resistant

### In-vivo result

#### Rabbit tibia implant model(4weeks)

\* Comparison of new bone formation(%)

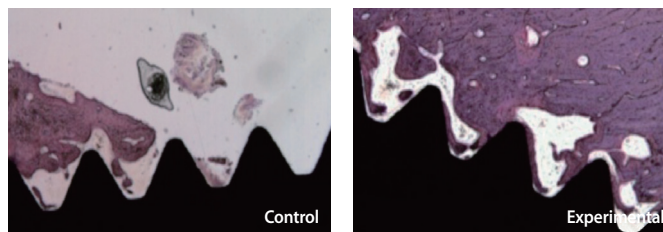


Percentage of new bone formation(%)	
Only implant	Implant and EXCELOS INJECT
8.48	<b>41.10</b>

\* Statistically significant :  $p < 0.05$

#### Mini pig mandibular implant model(4weeks)

\* Comparison of new bone formation(%)



Percentage of new bone formation(%)	
Only implant	Implant and EXCELOS INJECT
34.12	<b>42.56</b>

\* Statistically significant :  $p < 0.05$

### Specification

Ref. #	IEXT0500	IEXT0300	IEXT0100
Part #	IEX050	IEX030	IEX010
Weight	7.5 g	4.5 g	1.5 g
Volume	5 cc	3 cc	1 cc

품목명	엑셀오스 인젝트 영문 브로셔
디자인담당자	조정우
규격	210 x 297 mm / 양면
종이	스노우화이트 250g
인쇄	양면 4도 + 별색 1도 (Pantone 877c)
코팅	양면 무광 코팅
접지	없음
접착 (양면테이프)	없음
제본	없음
오시 (줄수)	없음
절취선 (미싱/줄수)	없음
돌출코팅 (에폭시)	없음
형압 (사이즈)	없음
박 (사이즈)	없음
기타	없음