

## About GENOSS

We promise our growth into the most enterprising company that stands in our global customers' shoes and values talents, technology and the environment.



Creating the best products and services



Contributing to the development of human society



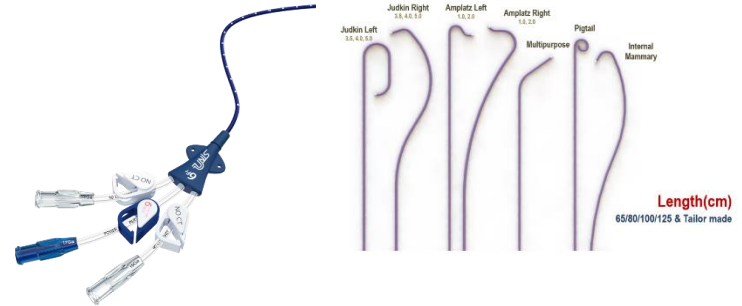
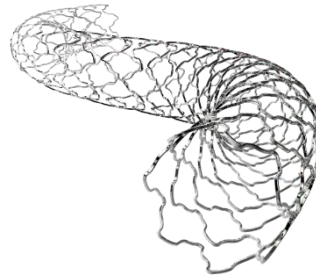
Being a representative of Korean medical device companies

# History of Genoss products

- Bare Metal Stent
- Inflator
- NC PTCA Balloon Catheter



- Drug Eluting Stent
- Peripheral Stent



- Diagnostic Catheter
- PICC
- Support Catheter

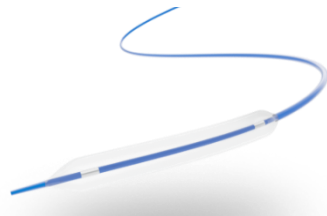
- Introducer Sheath



**2008**    2012    2015    2016    2018    2019    2020    2021



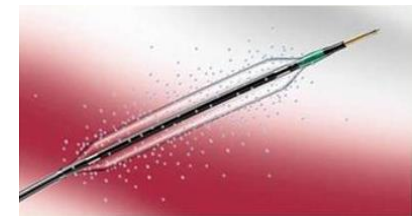
- PTCA Balloon Catheter



- Aspiration Catheter
- PTA Balloon Catheter



- Y- Connector
- Injector



- Drug Coated Balloon
- Earloon



# UNIS™

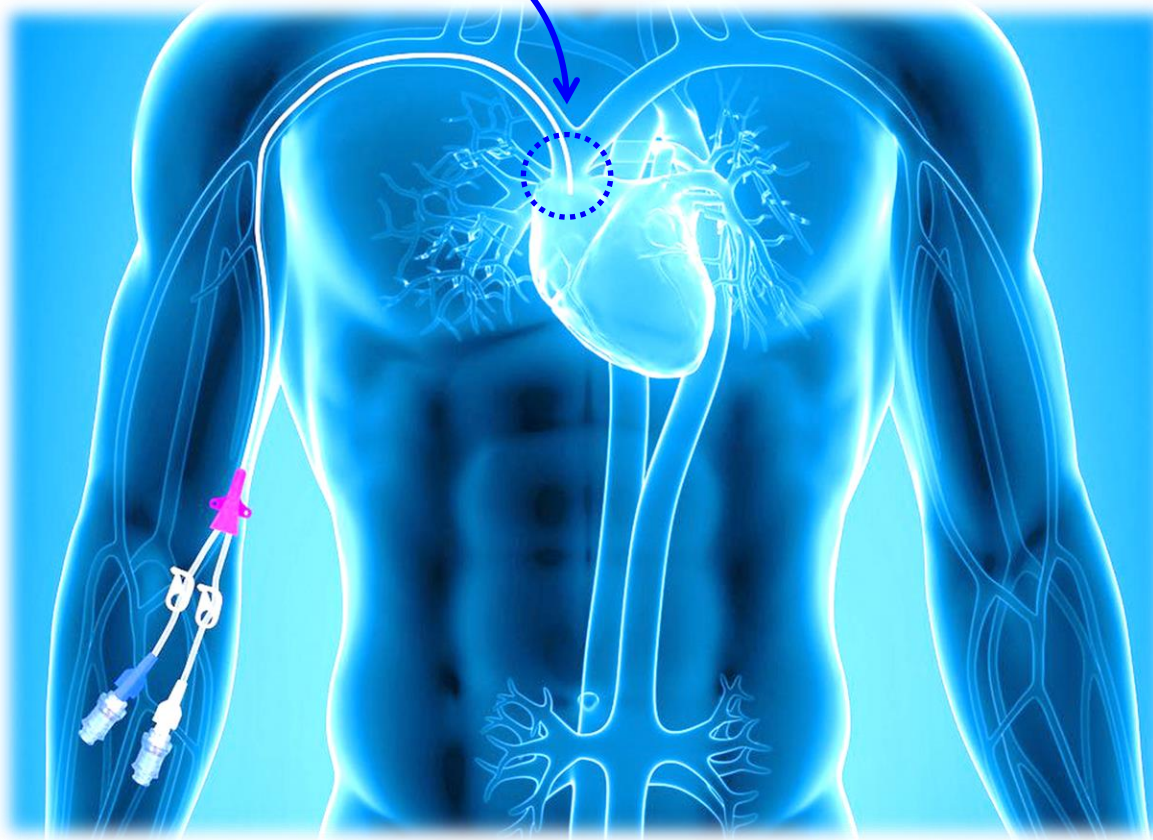
Peripherally Inserted Central Catheter



GENOSS

# Purpose of Use

Catheter Tip



## Name of Product

- Blood Vessel Tube Catheter
- Class II

- ✓ Cancer patients
- ✓ Dialysis patients
- ✓ Long-term IV injection

# Components

## Components

Main shaft + 8 kinds of Accessory

Hub, Clamp & Indicator

Paper Ruler

Single(4/5Fr)  
Dual(5Fr)/Triple(6Fr)  
Main shaft

Echogenic(Dimpling)  
Needle

Peel-away sheath(4/5/6Fr)

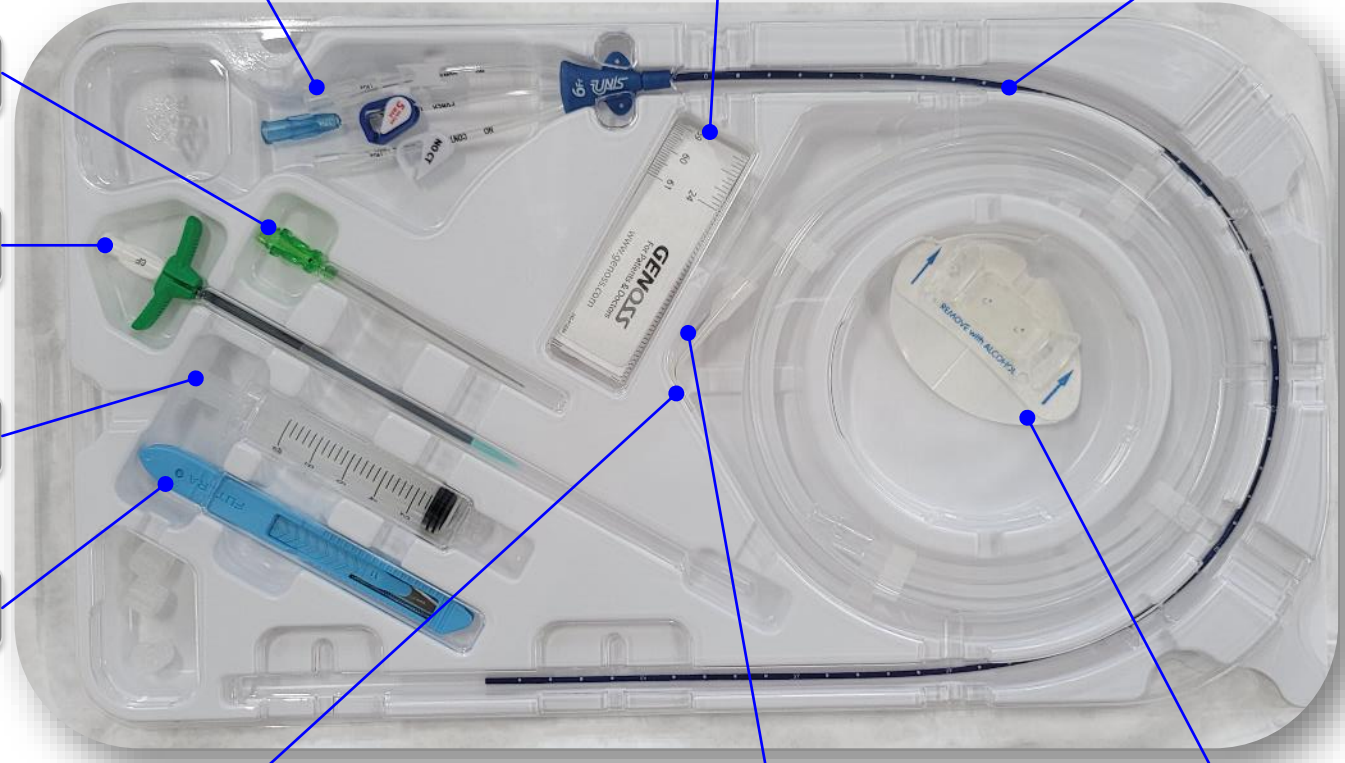
Disposable Syringe

Safety scalpel

Gold-plating Guide wire  
70/120cm

Stylet

Easy-fix Stat-lock



# Product specification

## Specification

Manufacturer	OD	Lumens	Length(mm)	Guide wire
GENOSS	4Fr	Single	550	- OD: 0.018" - Length: 70/120cm
	5Fr	Single, Dual, Triple		
	6Fr	Dual, Triple		
B Company	4Fr	Single	550	- OD: 0.018" - Length: 70/135cm
	5Fr	Single, Dual, Triple		
	6Fr	Dual, Triple		
H Company	4Fr	Single	550	- OD: 0.018" - Length: 45/70/130cm
	5Fr	Single, Dual, Triple		
	6Fr	Dual, Triple		

### Single Lumen ( 5Fr )



### Dual Lumen ( 5Fr )



### Triple Lumen ( 6Fr )



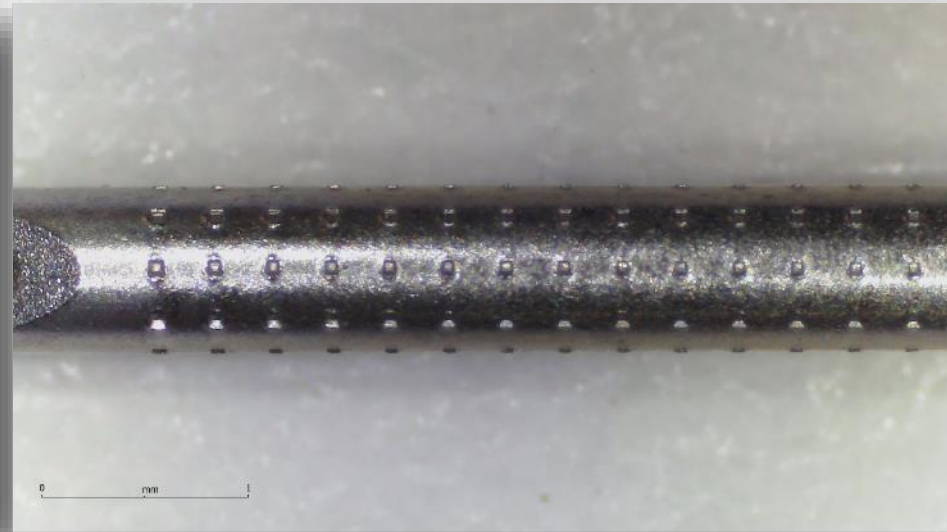
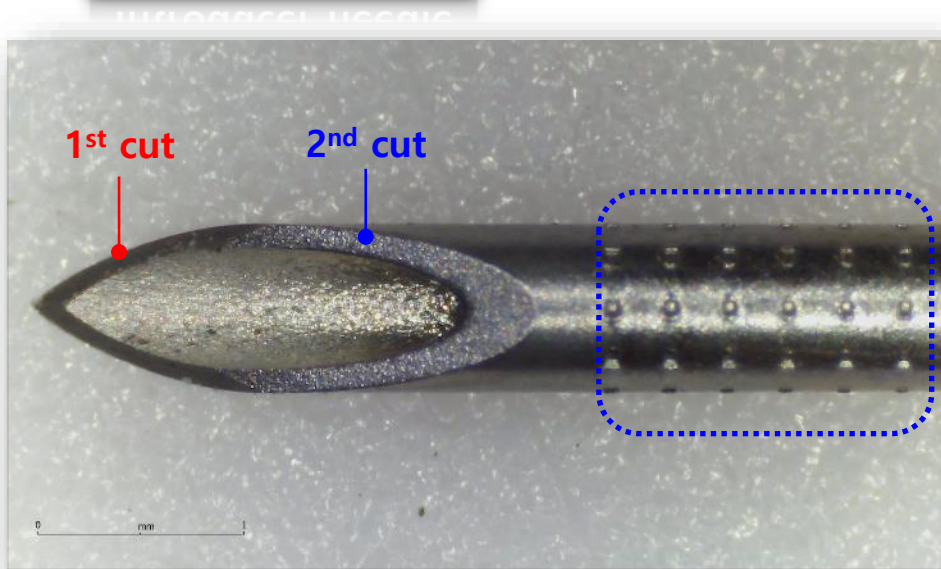
# Introducer needle features

GENOSS

## Introducer needle

Puncture + Radiopacity

Specification:  
21G x 7cm



### ● 2 Steps cutting

- Sharpening the tip of introducer needle maximizes puncture , minimize patient's pain

### ● Dimpling Technique

- Securing visibility by maximizing diffused reflection of ultrasonic waves

# Introducer needle Radiopacity

## Introducer needle Radiopacity

Specification:  
21G x 7cm



-	GENOSS	B Company	H Company
Design			
	Dimpling	Dimpling	Blasting
Radiopa city			



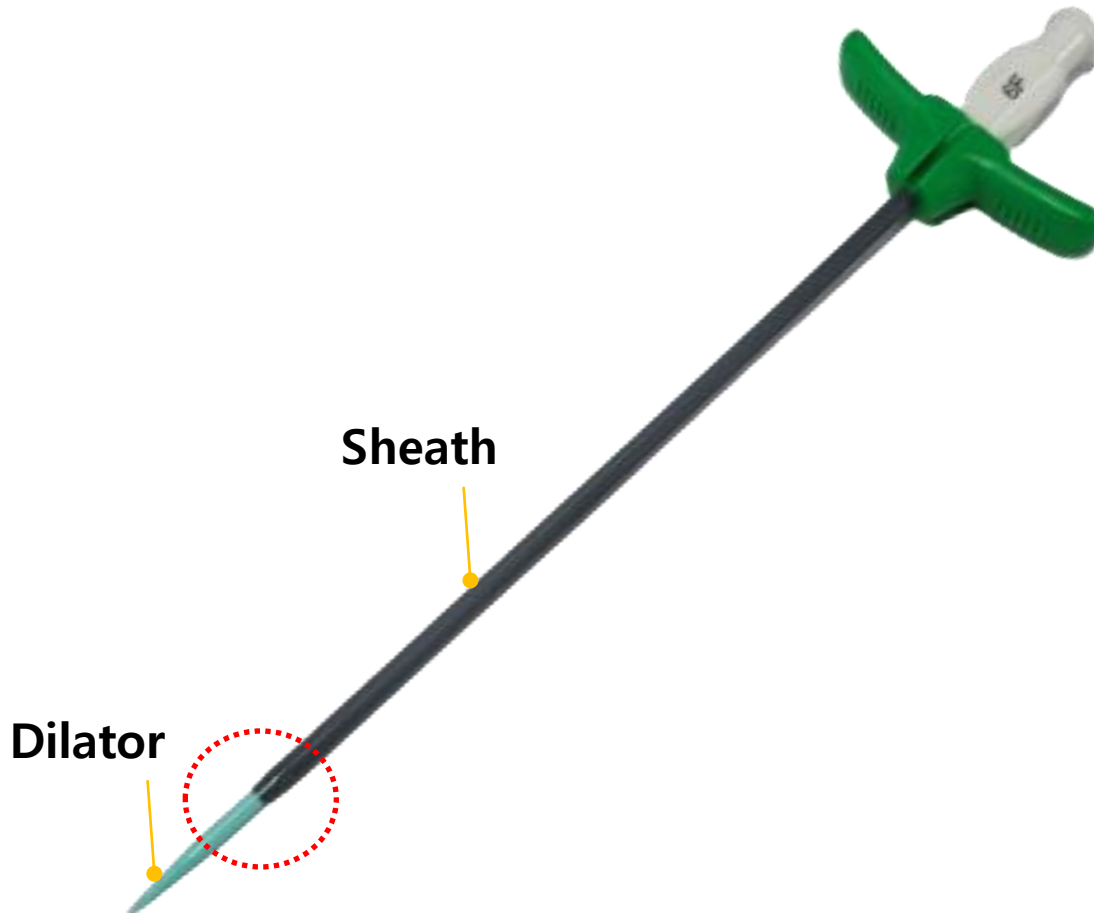
# Peel-away sheath features

GENOSS

Peel away sheath

Minimize the gap between Dilator and Sheath +  
Good Entry

Specification:  
4/5/6Fr x 10cm



# Sheath Push-ability

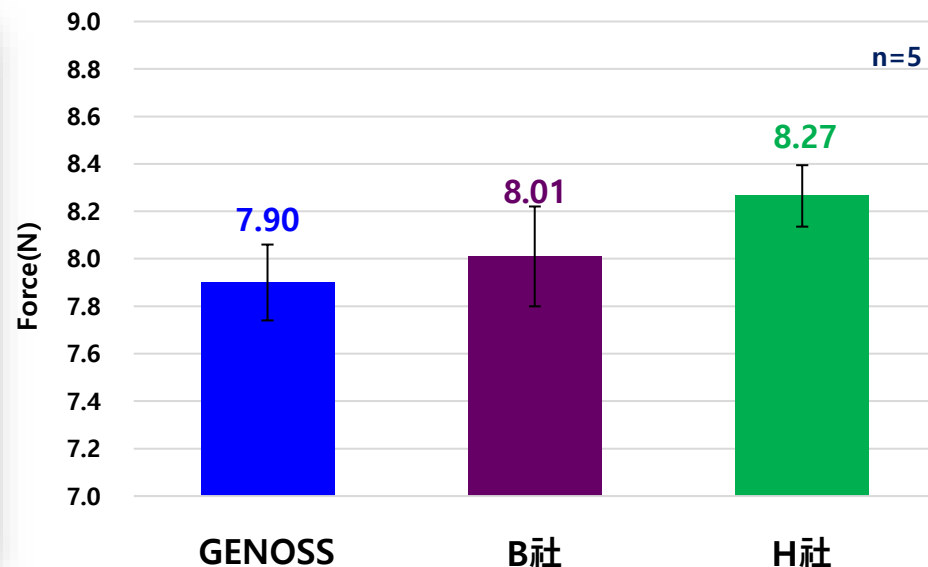
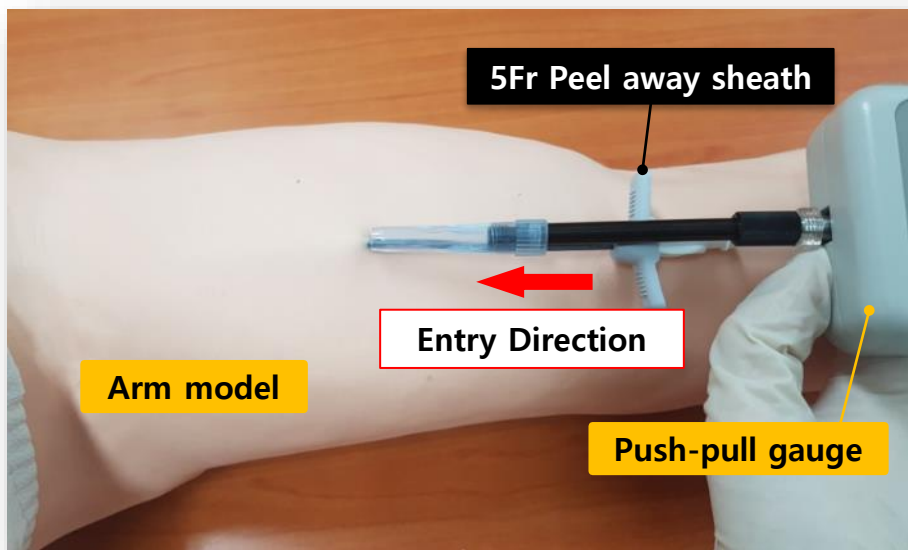
GENOSS



**Peel away sheath push-ability**

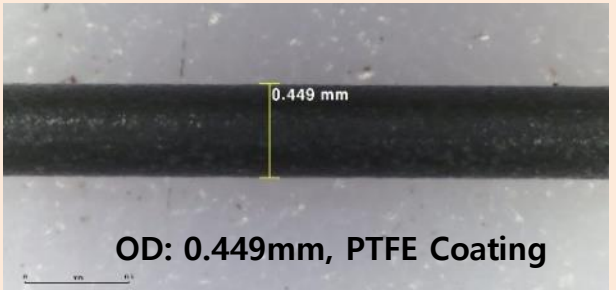
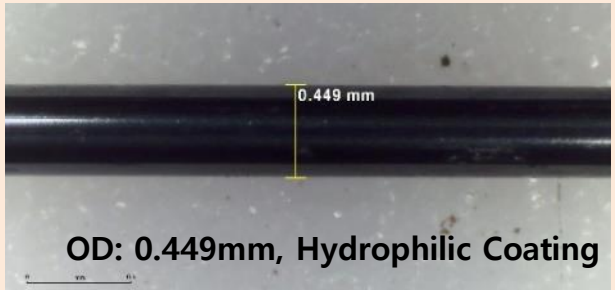
Induce product entry into blood vessels. (Shaft → Tapered type)

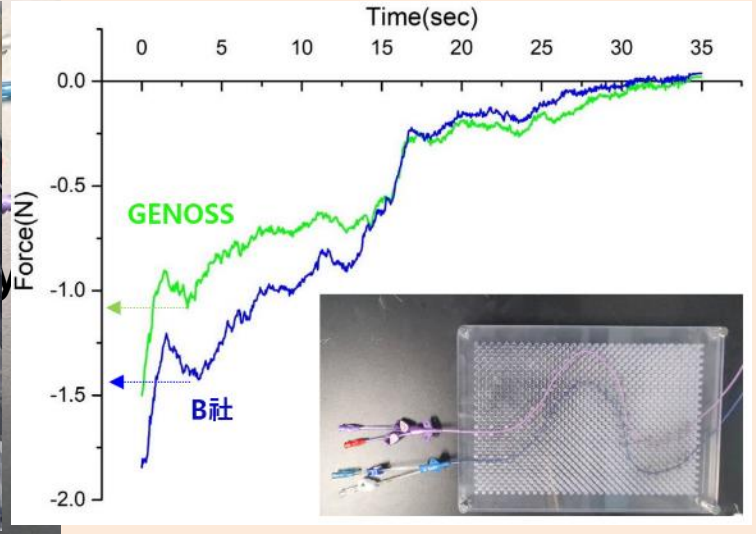
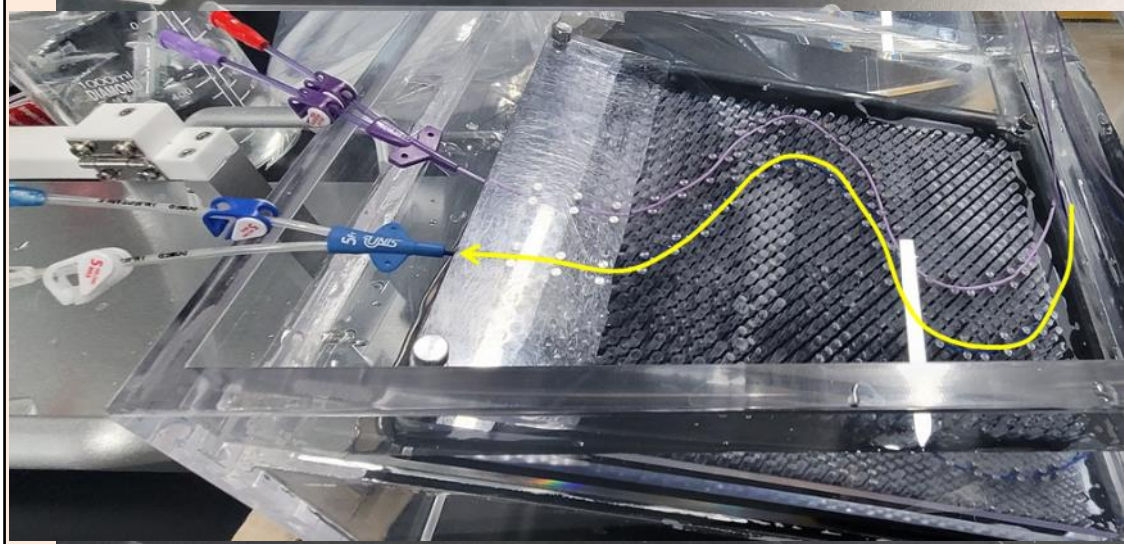
GENOSS	B Company	H Company
<p>Dilator: 1.848 mm Sheath: 2.244 mm</p>	<p>Dilator: 1.843 mm Sheath: 2.309 mm</p>	<p>Dilator: 1.868 mm Sheath: 2.497 mm</p>



# Guide wire Removal Force

## Guide wire removal

Products	GENOSS 018" wire	B Company 018" wire
Appearance	 <p>OD: 0.449mm, PTFE Coating</p>	 <p>OD: 0.449mm, Hydrophilic Coating</p>



# Order Information

Model	French size (OD)	lumens	Gauge size (ID)	Catheter Length (cm)	Maximum flow rate (with warmed Contrast)	Guide wire length (cm)
GP-5SIR	5F	1	16.5	55	5ml/sec	120
GP-5DIR	5F	2	18/18	55	5ml/sec	120
GP-6TIR	6F	3	17/19/19	55	6ml/sec	120
GP-5SIR70	5F	1	16.5	55	5ml/sec	70
GP-5DIR70	5F	2	18/18	55	5ml/sec	70
GP-6TIR70	6F	3	17/19/19	55	6ml/sec	70



Thank you