

Blade™



Identifying
Needs



Delivering
Innovation



Loving
World



새로운 경기 ▶ 공정한 세상

Address : #338-59, Songsan-ro, 266 beon-gil, Ilsanseo-gu, Goyang-si, Gyeonggi-do, Korea

Tel : +82-31-919-7875 **Fax** : +82-31-921-7875 **Website** : www.endac.co.kr **E-mail** : endac@endac.co.kr

Blade™

Premium Cervical Locking Bladed Cage

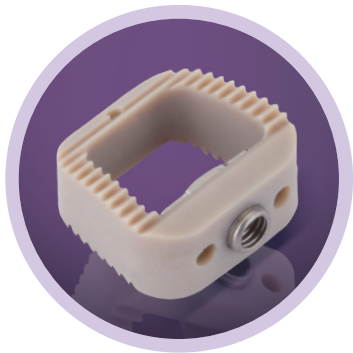
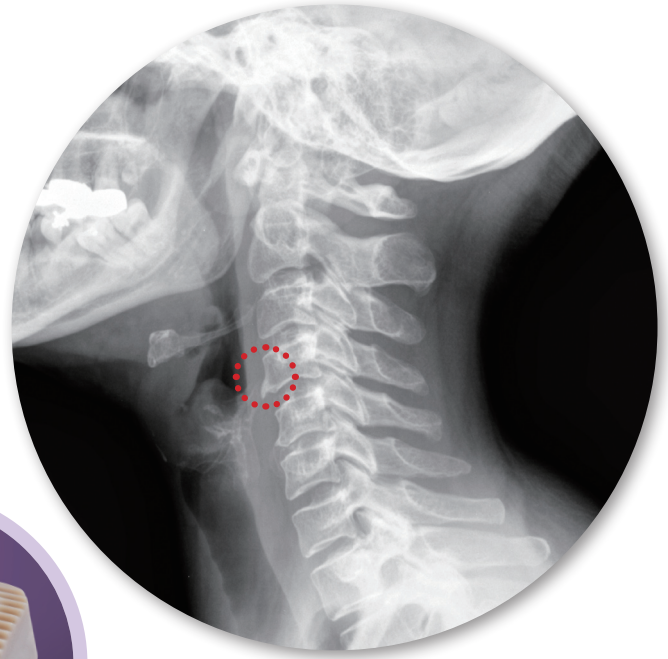


Blade™

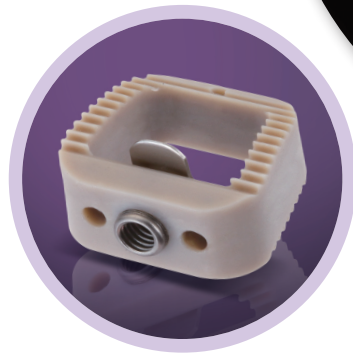
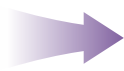
Premium Cervical Locking Bladed Cage

Key Features

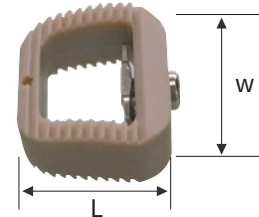
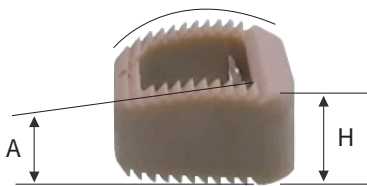
- Optimal Pull-Out Prevention
- Easy Control to Rotate Blade
- Self-Locking Blade System
- Wide Bone Fusion Space
- Optimal Anatomic Design



Before Rotating Blade



After Rotating Blade



Implant Specifications

Model No.	H(Height)	A(Angle)	L(Length)	W(Width)
BD041214	4.5mm	5	12.5mm	14mm
BD051214	5.5mm	5	12.5mm	14mm
BD061214	6.5mm	5	12.5mm	14mm
BD071214	7.5mm	5	12.5mm	14mm
BD081214	8.5mm	5	12.5mm	14mm
BD041416	4.5mm	5	14.5mm	16mm
BD051416	5.5mm	5	14.5mm	16mm
BD061416	6.5mm	5	14.5mm	16mm
BD071416	7.5mm	5	14.5mm	16mm
BD081416	8.5mm	5	14.5mm	16mm

Instrument Specifications

Model No.	Name	Model No.	Name
BDIN01	Caspar Retractor	BDIN17	Trial 5X14
BDIN02	Retractor Screw 12	BDIN18	Trial 6X14
BDIN03	Retractor Screw 14	BDIN19	Trial 7X14
BDIN04	Retractor Screw 16	BDIN20	Trial 8X14
BDIN05	Screw Driver	BDIN21	Holder
BDIN11	Trial 4X12	BDIN22	Sheath
BDIN12	Trial 5X12	BDIN23	Wrench
BDIN13	Trial 6X12	BDIN24	Bone Packing Block
BDIN14	Trial 7X12	BDIN25	Bone Packing Bar
BDIN15	Trial 8X12	BDIN31	Implant Case
BDIN16	Trial 4X14	BDIN32	Container

